

## PM60MA3H/00-16H IP Matrix Switcher System

2.5U Chassis With 8 slots for up to 16ch HDMI output

Powerful video wall management & Control IP camera like an analog System



### Product Feature

- Support for network media, H265/264, RTSP data input
- Support computer keyboard & Mouse direct input, U Flash storage.
- Modular chassis with 8 slots to have up to 16ch HDMI output , or optional to have input modular of HDMI, HD SDI, BNC, etc.
- Support 16ch audio output.
- Each Video Output can identify optimum resolution automatically, or allow the user to change the output resolution manually.
- every modular can decode 25ch at 4K@30hz or 100ch at 1080p@30hz.
- Support video-splitting output, up to 8x8 splitting
- Support monitor splicing by any size ,splitting, windowing, zooming in & out
- Support Cruise, Plan, split, splicing, etc. display mode, Plan configuration and management
- Optimize video, it can make video stream smooth and improve network jammed .

### R & D Ideas

Nowadays, IP products are absolute mainstream, partners are looking for a Decoder/ video wall controller/matrix combination allowing for and easy way to display and operate IP cameras and IP PTZs.

Simplicity of operation is the key and the ability to call a camera into a selected pane or window on video screen was the goal in developing this IP matrix switcher.

The command structure is simple: (1) (CAM) + (1) (MON) on the IP keyboard/PTZ controller allows the users to switch camera 1 to Monitor 1, while the joystick allows for precise operation of the PTZ.

This was the idea behind the development of the PM60MA3 ip matrix: the IP PTZ is operated much like a typical Analog PTZ system with each PTZ being assigned an IP address on the network switch and the communication path/language is over ip protocol.

## IP Matrix switcher system

### In general

PM60MA3H/00-16H Network matrix switcher is latest decoding matrix and ip decoder, can decode stream of H265/264 & RTSP, it is also a Video Wall Controller system with modular chassis, maximum 8 modular could have up to 16ch HDMI output .

Every modular could decode 25ch 4K or 100ch 1080p, perfect video wall management, including split, splicing, PIP, Plan, Cruise, etc. simple operation like analog system.

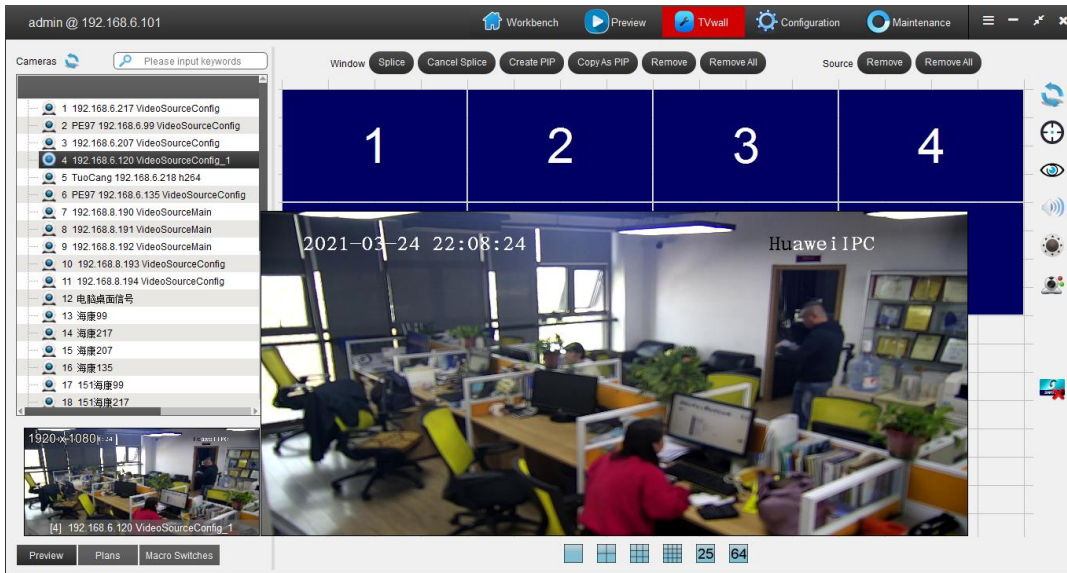
It can take stream from other platform on base of protocol or SDK.

### Rear panel

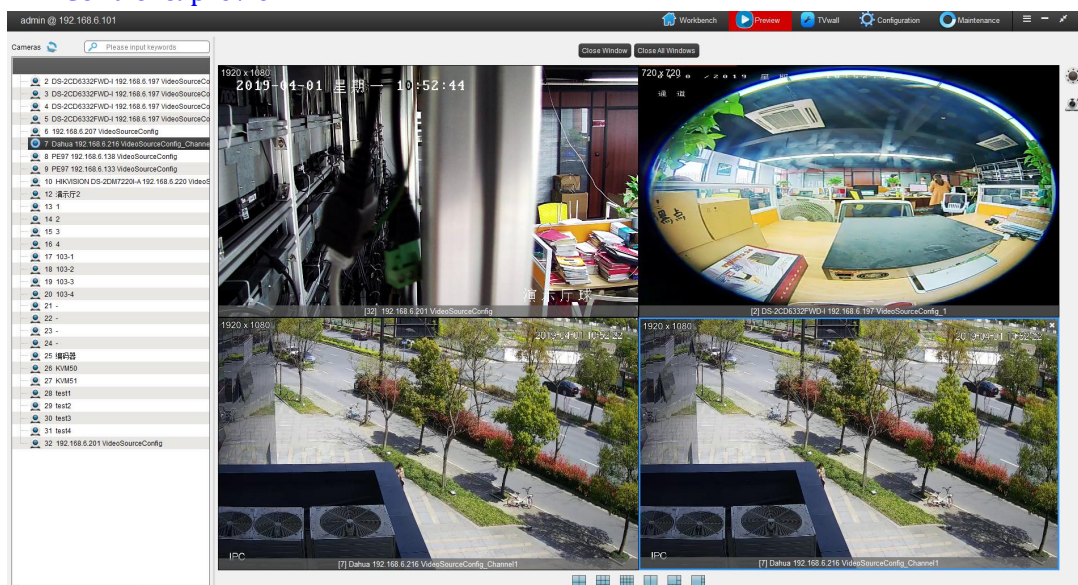


### Net client All-in-one software

Allows the user to graphically configure the Video wall and discover the IP cameras present on the local area network.



## PTZ Control &amp; preview



## Specifications

Available Models	PM60MA3H/00-16H with 16ch hdmi output PM60MA3H/1H-15H with 1ch hdmi input and 15ch HDMI output PM60MA3H/00-12H with 12ch hdmi output PM60MA3H/1H-11H with 1ch hdmi input and 11ch HDMI output
Physical	
output	Up to 16ch HDMI by one chassis
HDMI output resolution	1024×768P@60Hz,1280×720P@60Hz, 1366×768P@60Hz, 1920×1080P@30Hz, 3840×2160@30Hz
input	Optional physical input of 1ch HDMI, resolution up to 4K
Video	
Video decoding	H.265,H.264
Video stream resolution	4K,1080P,1080I,720P,D1
Decoding capability	One modular can decode 25ch 4K or100ch 1080p or 200ch 720p or 400ch D1.
Splicing	16 by one chassis, maximum 64 by 2 chassis cascading, it can splice the monitors connected on HDMI output. user-defined splicing.
Splitting	1/4/6/8/9/16/25/64, and user-defined splitting
Windowing and Cruise	support, it can set windowing on monitors to have maximum 128 layers' windowing.
OSD display	it can display OSD info. including window number, channel number, label, etc.

## IP Matrix switcher system

Audio	
encoding and decoding standard	support G.711, G.726, ADPCM
Audio enable/mute	it can turn on all audio and it can set one channel by quick operation.
input	support audio embedded in HDMI input or individual input.
Maintenance	
Basic applications	multiple user log in and log out, maximum 72 users on-line at same time. operation permission definition; Supports video switching and controlling.
	Support Segmentation display mode management.
	Automatic inspection, setting and call. Supports rollback playing.
System management and configuration	PETNET protocol available, once integration, the third party can manage this decoder, configuration upload and reload, operation permission setting and management
Maintenance	system log available.
	Fault detection and report.
	support online updating.

Port and connectors	
Ethernet	4ch, 1000Mbps adaptive RJ45 port, 1 master and 3 slave
Audio input	No physical input of audio
Audio output	Maximum 16ch, one modular with 1 audio output of $\Phi 3.5$ socket
RS232/422	1
Other functions	
Second development	support, SDK available
Time synchronization	internal RTC, it support automatic time sync. for multiple device.
	offers PENET protocol, it can synchronize time of time server.
Alarm input	support network alarm info. access.
Alarm process	support automatic or manual alarm process.
Monitor control	offers control port of monitor to control the monitors.
Stream self-adaptive	Support stream self-adaptive function, it can close this function, it can automatically choose main/sub stream to output to monitors.

IP Matrix switcher system

Stream media forwarding	embedded Stream media forwarding, one camera takes steam one time.
smooth playing function	support smooth playing function, it can automatically adjust and optimize stream stuck or pause caused by network transmission.
Decoding delay	150ms maximum
Power supply	AC100V ~ 230V. optional to have second power supply modular for stand by.
Power consumption	150W Maximum
Working temperature	0 ~ 50°C
Working humidity	10% ~ 90%;
Dimension	530.0mm(W)×510.0mm (D) ×220.0mm (H)
Gross/Net weight	8.0KG/6.2KGS

System Diagram



Dimension

